



## **Report on Testing of AMwand (Amized Fusion Technolog device) by Amega Global**

### **Polycontrast Interference Photography (PIP)**

**March 10<sup>th</sup>, 2010**

#### **General Description:**

The AMwand (manufactured by Amega Global) is a device containing *AMized Fusion Technology (AFT)*, a proprietary name referring to the wands emitting a beam of *zero point field energy* resonance.

**Polycontrast Interference Photography (PIP)** is an advanced photographic system developed by Harry Oldfield in the late 1980s as the visual counterpart to his Electro-Crystal System. It represents a step up from Kirlian Photography in terms of resolution and three-dimensional imagery of the energy field. PIP works on light interference patterns and it is totally non-invasive, as the subject is free-standing. A PIP scan shows areas of imbalance including blocks, areas of energetic inflammation or depletion, leakages and much more. Everything that happens to us during our lifetime is recorded in the energy field or biofield, and we are able to see it in full color patterns.

PIP equipment was used to film the electromagnetic field live, while it moved and changed, and to capture still photographs of its patterns. Then AFT was applied to the subject's energy field and PIP was used a second time to analyze any differences in the before and after patterns.

#### **Subjects and Witnesses Present during the Testing:**

Present in this session were the volunteer subject, two experienced practitioners operating the equipment, and 4 people who applied AFT to the volunteer. A cameraman filmed the session.

#### **Procedure and Results:**

During this procedure, the practitioners filmed and photographed the energy field of the volunteer, followed by the application of AMized Fusion Technology with 4 wands for 10 minutes. The areas of application were over the head, over the throat, over her lower back, and around her right knee.

The practitioners provided the following report on this session.

## Report Provided by Practitioners Operating the PIP Equipment

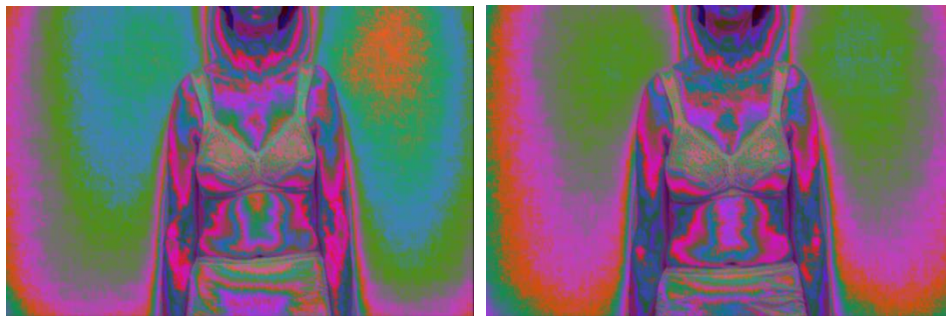
The following comments about the investigation done with the AMEGA wand are based on 2 hours of time spent analyzing the energy field of a volunteer subject both before and after using the AMEGA wand. As the energy field is constantly fluctuating it requires that the patterns which the body has, prior to any attempt to change it, be observed and then the patterns be observed once again after input from any therapy. While 2 hours is not actually enough time to categorically validate or invalidate any therapy the results obtained are interesting enough to warrant further investigation. We cannot confirm how long these possible changes would remain in the energy field as that was beyond the scope of this particular investigation. We list the observations below.

The PIP photos below are a selection of the images taken - the one on the left is the original and the one on the right is the subject after the “wanding”. Red or reddish/pink colors show the areas of dysfunction – either towards congestions/depletion or towards inflammation. Areas of red which pool together show congestion or depleted areas. Red outside the body indicates a place where energy is leaking out of the body. This usually happens after an injury, accident or cut, etc. Darker colors mean an energy field which is depleted of vitality.

Some comments about the After images follow the photographs.

BEFORE

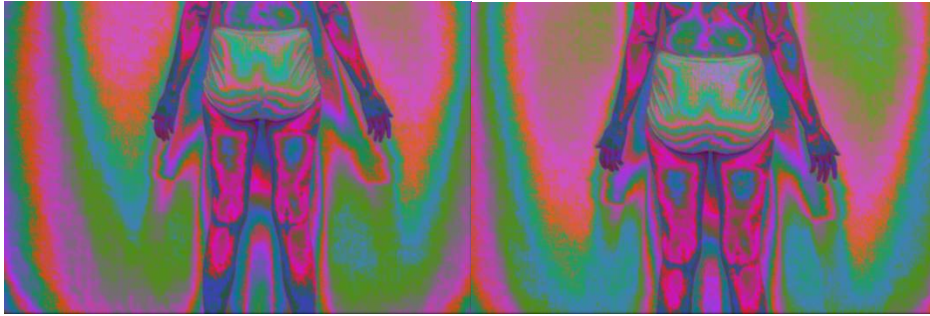
AFTER



001

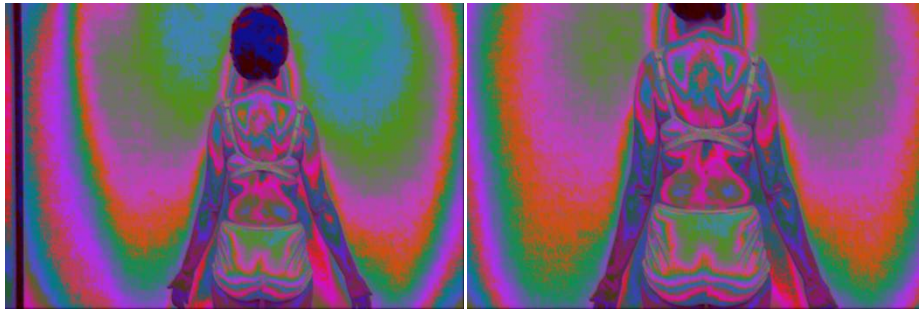
- the area around the heart has cleared
- the arms are more symmetrical (less red)
- the area around the head and shoulders has become green, showing balance
- base chakra – less congestion/depletion

002



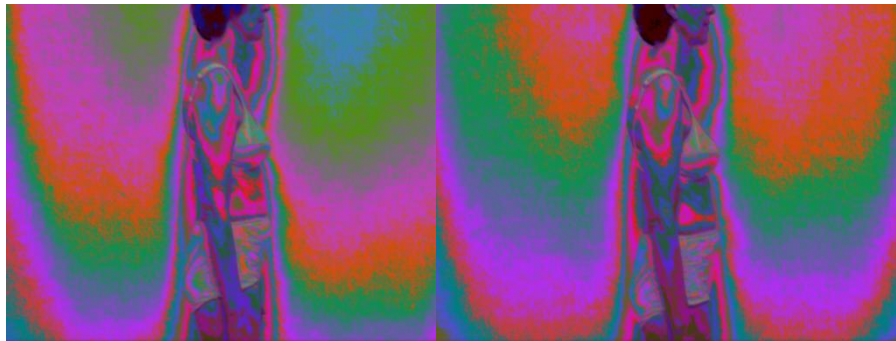
- the area around the Kidneys is more symmetrical with more green/balance

003



- the red circular area of congestion behind the heart and between the 2 scapulas is reduced
- the green area outside head and shoulders has increased

004



- the right side view shows that congestion/red over the Liver on the right abdomen (just in front of the elbow) has dispersed
- a leak from the back of the head (at the height of the occipital) is reduced

## **Discussion:**

As the comparison between the before and after PIP photographs show, only 10 minutes of application of AMized Fusion Technology helps the body move towards balance.

These results appear to support Amega Global's explanation that the AMwand and other AMized Fusion Technology products can rapidly energize the human electromagnetic field and body (as well as all other organic matter) to promote health. It is hypothesized that the supply of the frequencies contained in AFT to the organism in this manner induces a state of homeostasis, or balance. This is what triggers the natural self-healing mechanism of each individual to produce the changes necessary for cellular and/or energetic repair and improvement.

There appears to be a strong correlation between this process and the experiential results observed by many during the live demonstrations being organized by the company's independent distributors to show the effects that this technology has on immediate pain relief, increase in strength and flexibility, and the positive changes detected in the taste of food, water, wine, etc.